

OneTouch AT G2 And 10G Network Assistant

Reduce network troubleshooting time

More than 70% of IT organizations lack standardized processes to validate deployment and solve problems. This results in more than 1 hour (average) to resolve problems. In addition, 40% of IT tickets are not solved the first time and require escalation. Intermittent problems can take twice as long to resolve.

By automating and standardizing the validation and troubleshooting process, the OneTouch™ AT Network Assistant empowers novice network technicians to validate performance easily, solve more problems faster, and escalate issues more efficiently—allowing more IT projects to be completed on time.



Empower IT professional teams to effectively validate, and troubleshoot Ethernet and Wi-Fi access networks

- **All-in-one:**
- **Versatile:**
- **Standardize:**
- **Authoritative:**
- **Visibility:**
- **Collaborative:**
- **VoIP ready:**
- **Capture friendly:**
- **Centralized Management:**

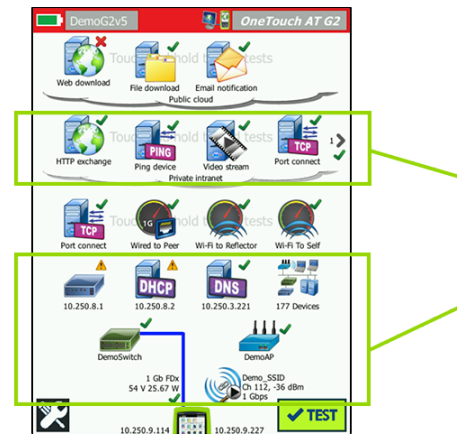
OneTouch AT features

Versatile copper, fiber and Wi-Fi troubleshooting

All-in-one testing from the patch cable & Wi-Fi to the cloud

Standardized network validation and troubleshooting

Automated suite of tests with pass/fail analysis



User-Defined Performance Tests

Connectivity and response time test to application/servers, and performance test to end-point(s) in all three network layers: the local broadcast domain, the private intranet and the public cloud (internet).

Client Network Analysis

Cable and nearest switch test, Wi-Fi network accessibility test, Wired and Wi-Fi access network/device discovery & network service tests: DHCP & DNS & 802.1x

Figure 1. The AutoTest provides a comprehensive measurement of network performance from the end user point-of-view, from cable, to services and applications (Test result from OneTouch AT with G2 Modules for both Wired and Wi-Fi network shown)

Centralized cloud-based management

Centralized report management

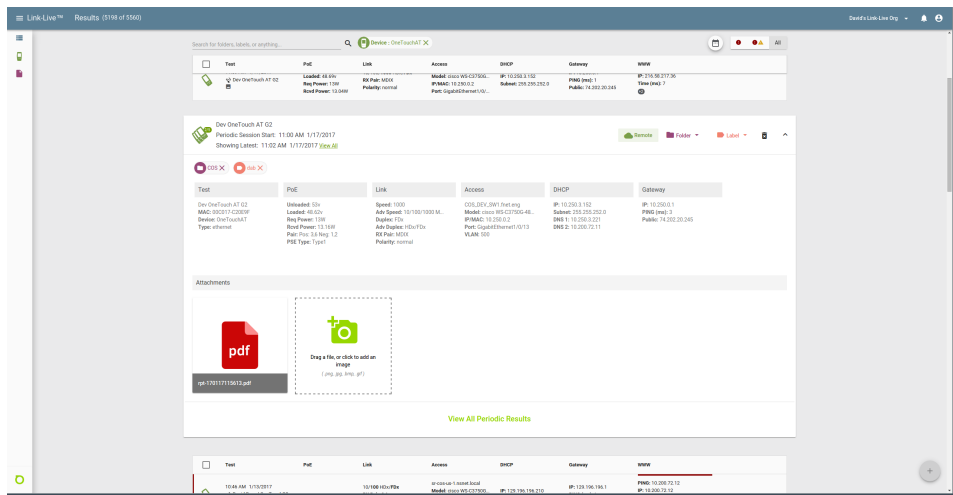


Figure 2. Link-Live consolidates test results from OneTouch AT

Remote visibility, control and file access

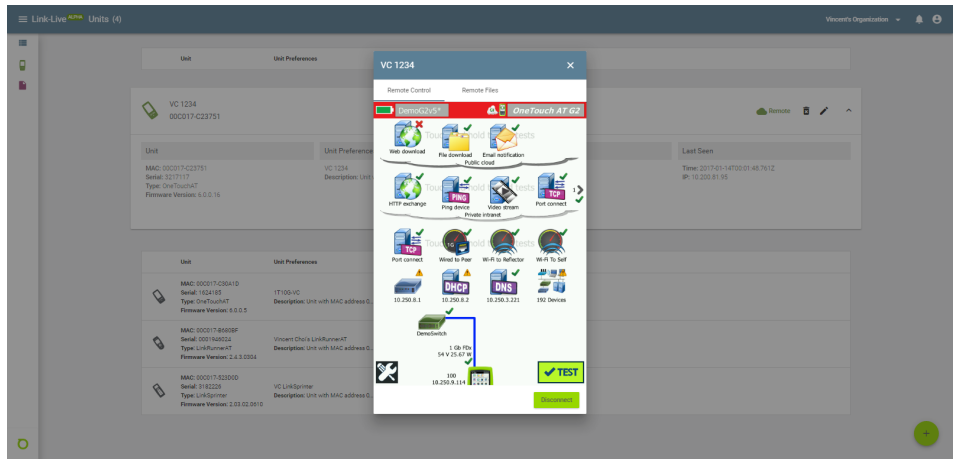


Figure 3A. Remotely control the OneTouch AT and access saved results using a Laptop, or tablet

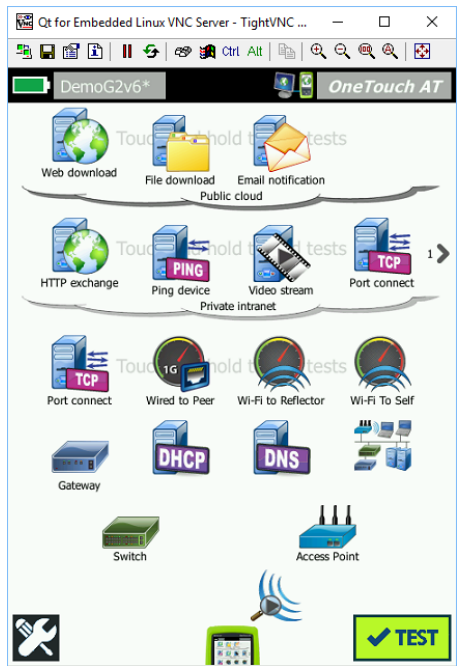


Figure 3B. Remotely control the OneTouch AT through VNC client (TightVNC Viewer shown)

Test Features

Copper and fiber-optic cable testing (Supported with OneTouch AT G2 module)

PoE testing (Supported with OneTouch AT G2 Module)

Wi-Fi and wired client devices connectivity testing

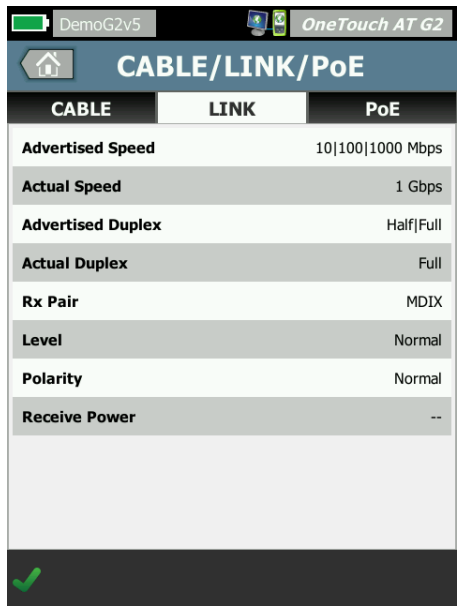


Figure 4. Test link speed over twisted pair and fiber-optic links at rates up to 1 Gbps and measure PoE voltage with the G2 Module

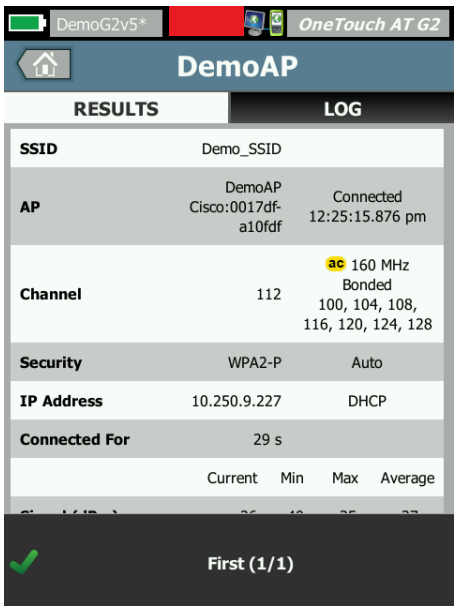


Figure 5. Test a Wi-Fi connection at up to 802.11ac rates and verify channel width, signal and noise level

Network services testing



Figure 6. Detailed breakdown of DHCP provisioning and response performance

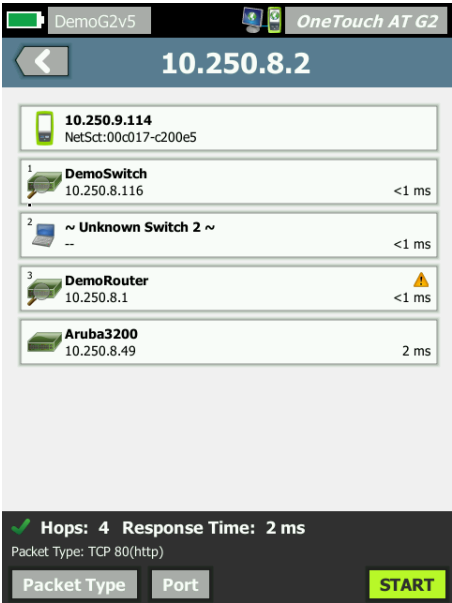


Figure 7. Path Analysis showing the path through switches from OneTouch AT to a client

Network application testing

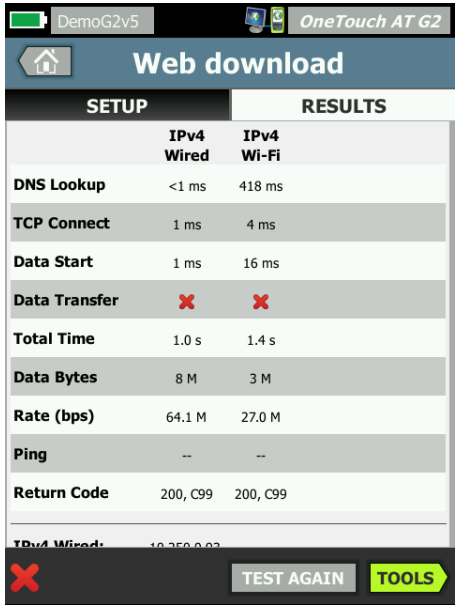


Figure 8. Detailed breakdown of network-hosted application performance

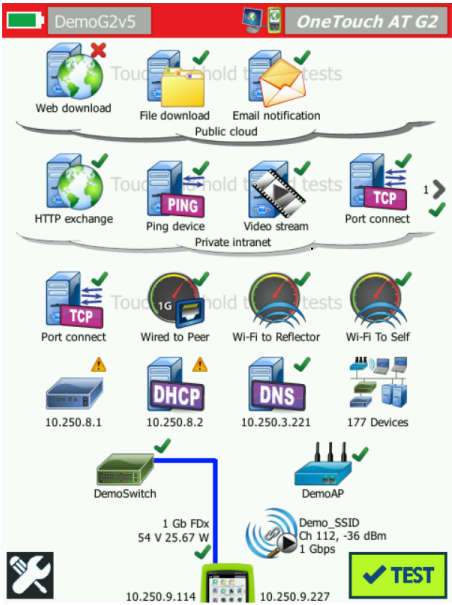


Figure 9. Group tests by hosting location - local, intranet, internet

Local, intranet and internet performance

Enterprise network managers use the Wired Performance tests for:

-
-
-
-

Service providers and system integrators use the Wired Performance tests for:

-
-

1G and Wi-Fi End-to-end path performance measurement

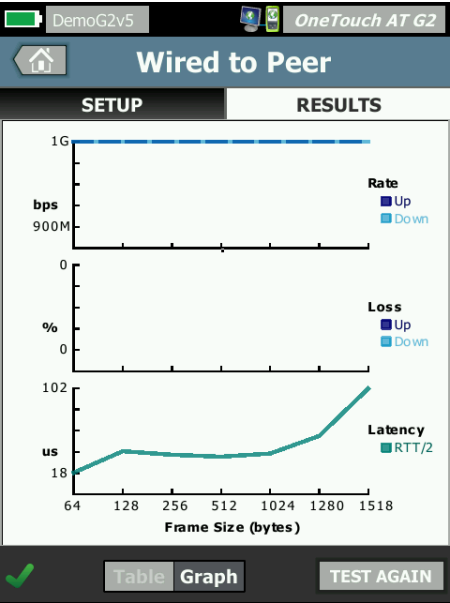


Figure 10. End-to-end path performance measurement validates link readiness and SLA compliance



Remote Tester (End-Point)		
OneTouch AT G2 as local	LinkRunner AT 2000	OneTouch AT G2 (wired)

10G End-to-end path performance measurement

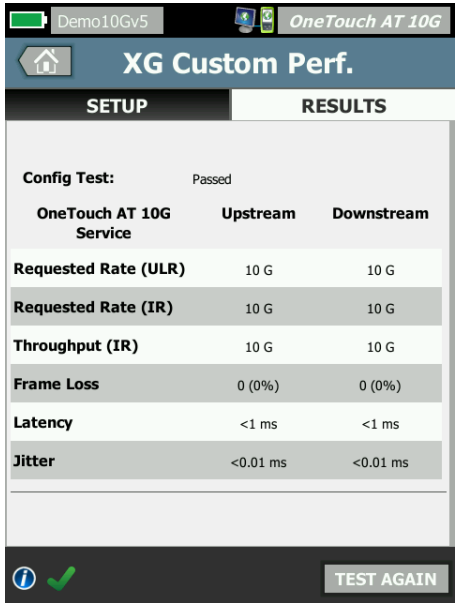


Figure 11. Detailed breakdown of XG custom performance

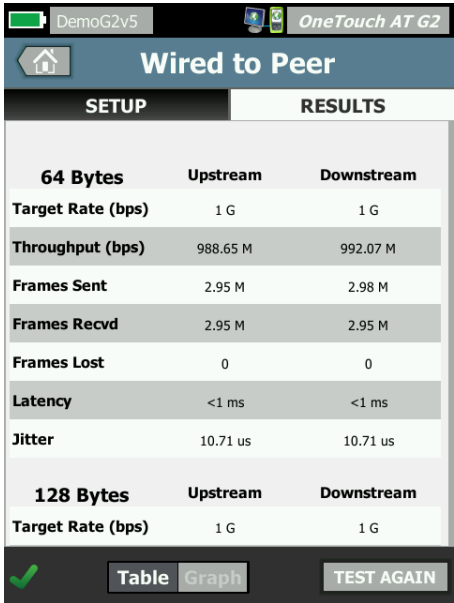


Figure 12. Detailed breakdown of wired to peer



	Remote Tester (End-Point)			
OneTouch AT 10G as local	LinkRunner AT 2000	OneTouch AT G2	OneTouch AT 10G	OptiView XG

Wired network discovery and analysis

Wi-Fi discovery and analysis (supported by OneTouch AT G2 Module)

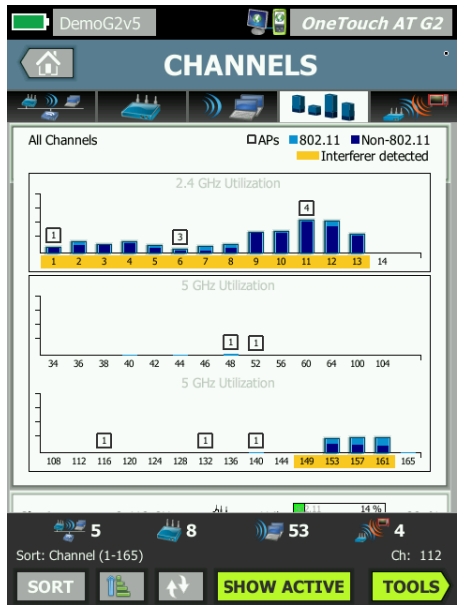


Figure 13. Analyze Wi-Fi health by each available channels

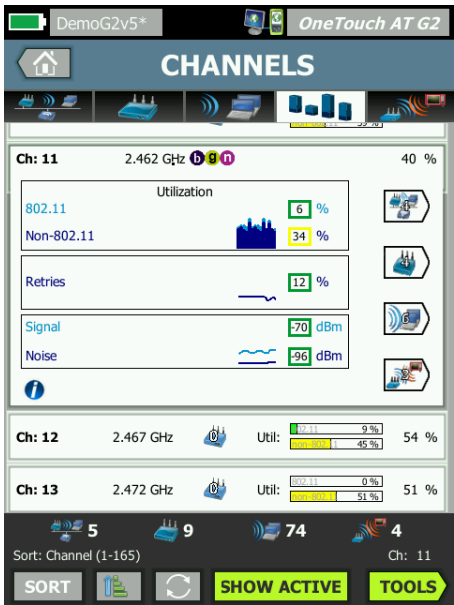


Figure 14. Visibility into each Wi-Fi channel, showing bandwidth occupied by 802.11 and non-802.11 traffic



Figure 15. Unique Interferer analysis classifies sources of non-802.11

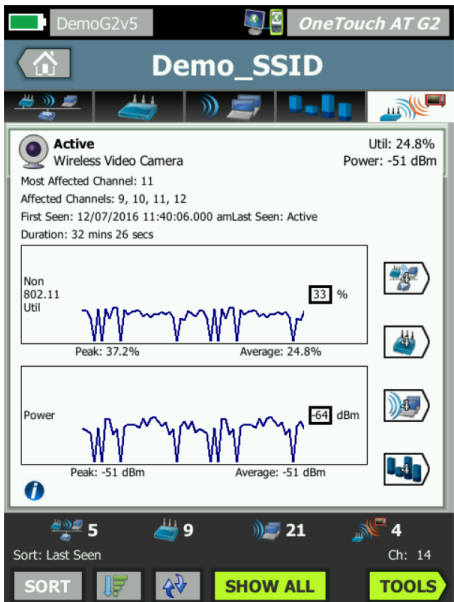


Figure 16. Detailed information about a specific interference source

Inline VoIP analysis (Supported by OneTouch AT G2 Module only)

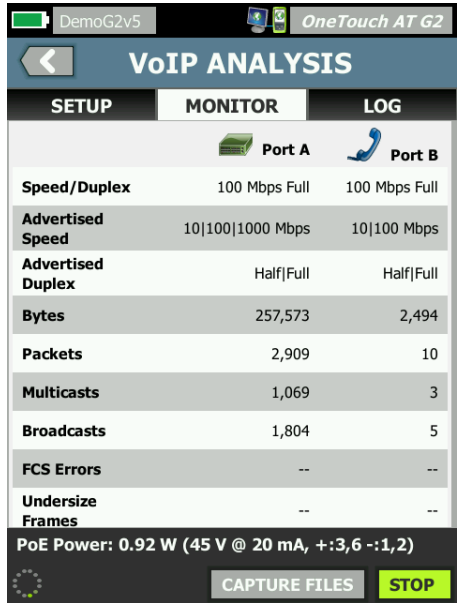


Figure 17. Inline VoIP analysis simplifies troubleshooting of desktop VoIP problems in real-time without TAPs or switch mirror ports



Figure 18. VoIP Analysis shows the entire call setup process as well as quality of the VoIP call in each direction

Packet capture



Figure 19. Inline packet capture simplifies documentation of client application problems without TAPs or SPAN ports

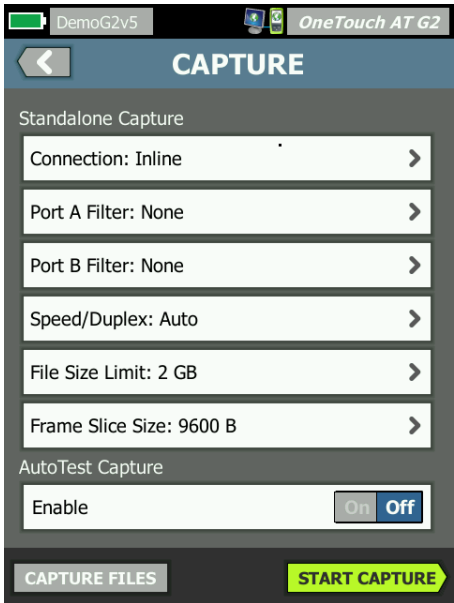


Figure 20. Capture packets to solve complex issues

Streamline collaboration

Save test results

Setup wizard

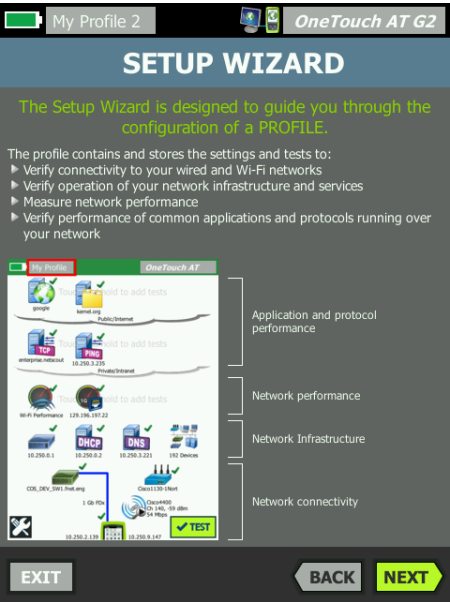


Figure 21. Setup Wizard simplifies creation of AutoTest profiles



Figure 22. Detailed breakdown of network service performance

Purpose-built for use by field team

Gold Support

Technical Specifications

GENERAL

Dimensions (with module and battery installed)

Weight (with module and battery installed)

Display

AC adapter

Battery type

Battery life

Memory

Management port

G2 MODULE NETWORK INTERFACES

Network analysis ports

Wi-Fi adapter data rate

Wi-Fi adapter operating frequency

Wi-Fi security

10G MODULE NETWORK INTERFACES

Network analysis ports

Management port

Supported network standards

RFCs and standard MIBs used

Note: The OneTouch AT analyzer is NOT designed for connection to a telephone network, ISDN line. Do not connect to a telephone network or ISDN line except through a regulatory agency compliant computer network modem device.

COPPER CABLES TEST

Cable types

Cable length measurement

ENVIRONMENTAL AND REGULATORY

Operating temperature

Battery charging temperature

Storage temperature

Operating relative humidity
(% RH without condensation)

Shock and vibration

Safety

Operating altitude

Storage altitude

Pollution degree

EMC

CERTIFICATIONS AND COMPLIANCE



Mainframes	
Model	Description

Gold Support	
Item	Description

One-year and three-year Gold Support is available for mainframes, bundles and upgrades. We encourage customers to purchase Gold Support at the time of purchase. Purchase of Gold Support after product was shipped will be subjected to back-date charge. Please contact your nearest NETSCOUT sales representative for models and pricing.

Options & Accessories	
Model	Description

Bundles	
Model	Description

Gold Support for Bundles	
Model	Description