

Xirrus Management System

DATASHEET

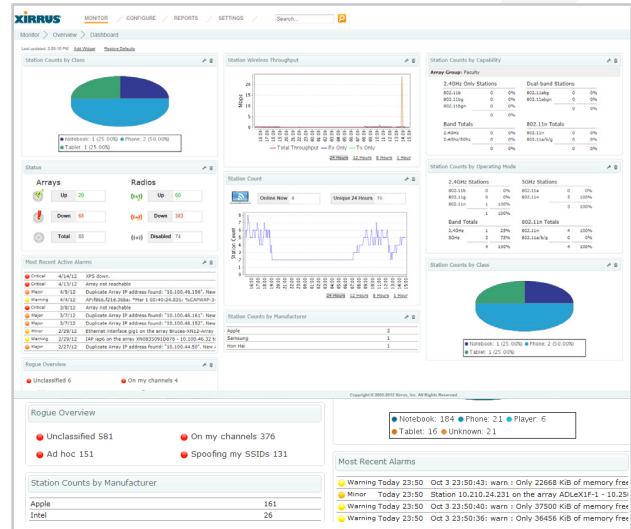
Xirrus Management System

The Xirrus Management System is a wireless network lifecycle management platform enabling network administrators to efficiently operate, configure and maintain Xirrus Wireless Arrays from a single vantage point.

The Xirrus Management System (XMS) automatically discovers, configures, and monitors a Wireless Array network, and can scale from single site to large scale, multi-site deployments. Network administrators choose from a range of installation options including on-premise software, pre-configured appliances, or a private cloud based option, providing the flexibility needed for fast implementation and lowest costs to best fit the organization operating requirements.

At A Glance

- Centrally define and manage configurations and policies
- Monitor wireless network performance
- Drill down reporting and analytics
- Security monitoring & alerting
- Simplified troubleshooting and ongoing maintenance



Centralized Administration & Management

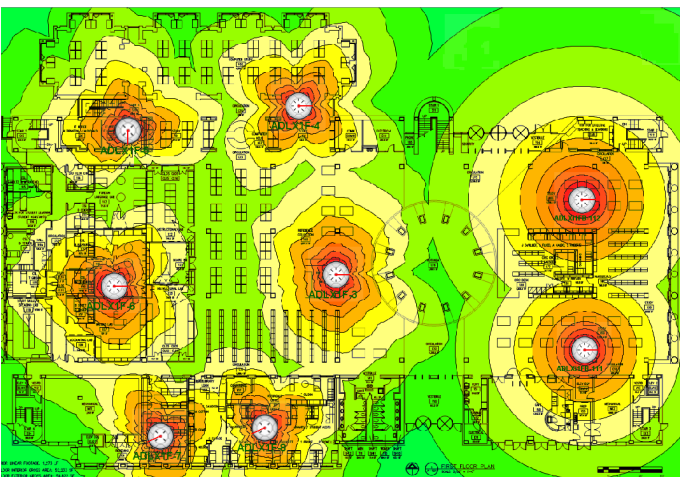
Network administrators simplify their day-to-day activities through the centralized management console where they can manage and maintain multiple configuration settings and security policies to selectively apply across the Xirrus Wireless Array network. Administrators can continuously monitor wireless network performance and security policy compliance to ensure end user productivity while reducing the risks of security breaches. Network architects can use drill down reports and analytics to provide the actionable insight needed to plan upgrades and improve the wireless network to meet business needs.

Features Include

- Web based user interface
- All in one quick look dashboard with real-time monitoring
- Heat maps and location of clients and rogues
- Network discover capabilities & device identification
- Centralized configuration management with enhanced policy controls
- Flexible deployment options including application software, pre-configured appliance, and cloud-based deployment
- Simplified troubleshooting with Network Assurance and Station Assurance
- Aggregated IDS/IPS display and alarms
- Pre-configured reporting with drill down details

XIRRUS MANAGEMENT SYSTEM HEAT MAP

With multiple Arrays placed on the map, triangulate wireless clients



Xirrus Management System

Key Features

Web-based user interface

Web based interface provides network administrators with browser based access to the Xirrus Wireless Array network information and management capabilities.

Network discovery

Automatically discover Xirrus Wireless Arrays across multiple subnets anywhere in your IP network. Xirrus Wireless Arrays can also detect and alert the XMS that new equipment has been installed on the network.

Configuration management

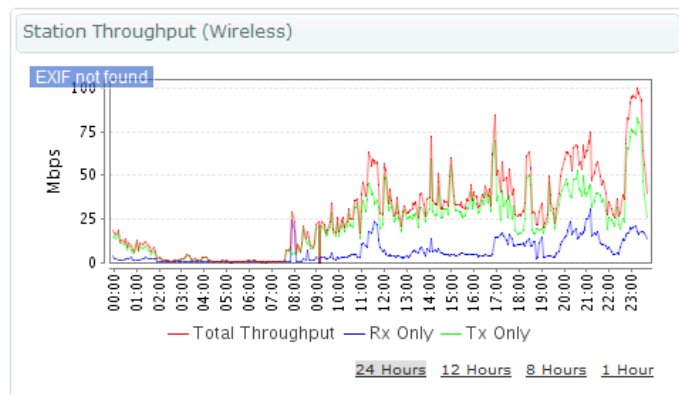
Assign and configure newly discovered Wireless Arrays with default or pre-selected policies. Save time by using configuration templates to apply those policies to individual Arrays or groups of Arrays.

Station Assurance

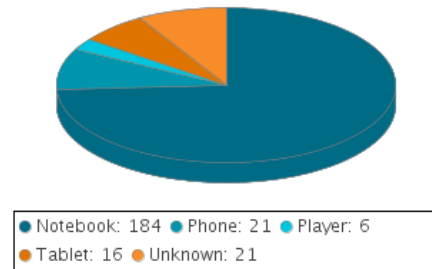
Track, monitor and review station information including error rates, authentication failures, retry rates, data rates and more to simplify troubleshooting through an aggregated view of station assurance events.

Network Assurance

Continuously test both network management and customer facing v lans for functionality for all wireless Arrays on the network to ensure wired side connectivity to the end users.



Station Counts by Class



Intrusion Detection

Aggregated view of the Wireless Array integrated IDS system monitors and alerts administrators on more than a dozen known wireless network attacks and impersonation attacks.

Detailed Wireless Array & Station Details

View detailed information on Wireless Arrays and stations from the chosen devices perspective proving information on associations, uptime, system information, events and rogues.

Real-time monitoring

Consolidated dashboard view provides a real-time summary of throughput, array, radio (IAPs), station, security and alarm information with drill down filtering.

Wireless network mapping

Create you own hierarchical structure of Array groupings along with physical location maps to easily identify different locations.

Drill down reporting

Gain an understanding of the wireless network performance over time with highly detailed, pre-defined reports.

Security monitoring & managment

Continuously monitor the wireless network for security threats, rogue access points, and other unauthorized devices. Automated alerts notify administrators upon discovery of potential rogue devices and threats.

Flexible deployment options

Choose from three deployment options to best fit your operational requirements. The Xirrus Management System is available as a pre-configured appliance, a Windows Server based software application or a private cloud based deployment.

Xirrus Management System

XMS SPECIFICATIONS				
General				
Management Standards	HTTP/HTTPS SNMP v1, v2c, v3		SSHv2 TFTP NTP	
Configuration				
Configuration Policies	System Information Management Control Network Services	VLAN DHCP Server Security	SSIDs Integrated Access Points (IAPs) RF	Wireless Distribution System (WDS) Filters Global
Policy Creation	Automatically create policies from existing Array Manual creation of policies			
Array Groups	Definition of wireless Array groups			
Policy Groups	Definition of policy groups Policies can be applied to single or groups of wireless Arrays			
Auditing	Audit record of wireless Array configuration changes			
Monitoring				
Dashboard	Real-time summary display of Array, Radio, Station, Security, and Alarm parameters, including: – Real-time graph of total Station Throughput and Station Count – Station counts by Device Class (Notebook, Phone, Tablet, Player) – Station counts by Manufacturer – Station counts by Operating Mode (802.11a/b/g/n) – Station counts by Capability (2.4GHz/5GHz) – Most Recent Alarms – Rogue Overview			
Maps	Map views with RF heat maps and location of clients and rogues			
Alarms & Events	Aggregated view of Events and Alarms Sort/search for drill down analysis			
IDS Events	List of IDS events and event information			
Rogues	Detailed list of rogue devices			
Syslog	Internal syslog server Aggregation of all Array syslog messages			
Discovery				
Xirrus Wireless Array Discover	Network-wide Array discovery Specify IP subnets, SNMP community string, polling interval			
Security				
Administrator Accounts	Definition of multiple accounts Read-write or read-only accounts			
Reporting				
General Features	On-demand HTML reports Filtering by location or Array group Drill-down by date and time range		Automatic filtering Charting and graphing	
Pre-defined Reports	Traffic Reports Wireless traffic Wireless errors Station traffic Station errors Ethernet traffic Ethernet errors	Station Reports Station sessions Station classification Station assurance Associated stations Stations by Array Unique station count	Array Reports Array inventory Array availability RF Reports Channel Usage	Security Reports IDS events Rogue list
Software Management				
Software Image Management	On-demand Array software updates Updates applied to one or more Arrays Scheduled updates			
Backup and Restore	Save and restore all policy definitions Save and restore application data			

XMS Server Sizing Guidelines

XMS-9000-WIN	SMALL SCALE INSTALL	MEDIUM SCALE INSTALL	LARGE SCALE INSTALL
Max modular APs Managed	500	2,000	5,000
Max Stations Managed	5,000	10,000	25,000
Recommended Processor	Single Quad-Core	Dual Quad-Core	Dual-Quad Core
Recommended RAM	4GB	8GB	16GB
Recommended Storage	150GB	500GB RAID-1	1TB RAID-10
Operating System	Windows 2003 or 2008/R2 Server x86 (32-bit) or x64 (64-bit)	Windows 2003 or 2008/R2 Server x86 (32-bit) or x64 (64-bit)	Windows 2003 or 2008/R2 Server x86 (32-bit) or x64 (64-bit)

XMS-9000-VM	SMALL SCALE INSTALL	MEDIUM SCALE INSTALL	LARGE SCALE INSTALL
Max modular APs Managed	500	2,000	5,000
Max Stations Managed	5,000	10,000	25,000
Recommended Processor	Single Processor +	Dual Processor	Dual Processor +
Recommended RAM	4GB	8GB	16GB
Recommended Storage	RAID-0 or 1/Thin Provision	RAID-1/Thin Provision	RAID-10/Thin Provision
Recommended VMWare OS	ESXi-5	ESXi-5	ESXi-5

XMS Appliance Specifications and Sizing Guidelines

XMS APPLIANCE	XM-3320	XM-3340	XM-3360
Max modular APs Managed	500	2,000	5,000
Max Stations Managed	5,000	10,000	15,000
Processor	1xIntel® XEON®	2xIntel® XEON®	2xIntel® XEON®
RAM	4GB	4GB	8GB
Storage	1x150GB	2x150GB RAID-1 Mirror	4x150GB RAID-10 Redundant
Power Supply	Single	Single	Dual Redundant
Dimensions	Depth: 15" Width: 17" Height: 1U Weight: 12 lb	Depth: 15" Width: 17" Height: 1U Weight: 12 lb	Depth: 15" Width: 17" Height: 2U Weight: 18 lb

NOTES:

Sizing is based on specific settings and loads, and will vary for each customer.

For larger Installations, or for more specific recommendations contact Xirrus for assistance.

XMS will run on other versions of VMWare, such as player and workstation, however for production environments we recommend ESX.

Ordering Information

PART NUMBER	DESCRIPTION
Choose your base platform:	
XMS-9000-WIN	Xirrus Management System to operate on customer supplied Windows Server. Requires license, order desired number of modular APs.
XMS-9000-VM	Xirrus Management System to operate on customer supplied VMware virtual machine. Requires license, order desired number of modular APs.
XMS-9000-XM	Requires license, order desired number of modular APs. Requires Appliance, order desired size of Linux-based appliance.
Choose the number of modular APs to be managed. Includes 90 day Software Product Warranty.	
XMS-9000-50	Xirrus Management System license for up to 50 modular APs.
XMS-9000-100	Xirrus Management System license for up to 100 modular APs.
XMS-9000-200	Xirrus Management System license for up to 200 modular APs.
XMS-9000-500	Xirrus Management System license for up to 500 modular APs.
XMS-9000-1000	Xirrus Management System license for up to 1000 modular APs.
XMS-9000-2000	Xirrus Management System license for up to 2000 modular APs. Not for XM-3320 Linux-based appliance.
XMS-9000-5000	Xirrus Management System license for up to 5000 modular APs. Not for XM-3320 or XM-3340 Linux-based appliance.
XMS-9000-10000	Xirrus Management System license for up to 10000 modular APs. Not for XM-3320 or XM-3340 Linux-based appliance.
XMS-9000-PLUS	Xirrus Management System license for over 10000 modular APs. Not for XM-3320 or XM-3340 Linux-based appliance.
For XMS-9000-XM, choose the desired size of Linux-based appliance	
XM-3320	XMS Linux-based 1U appliance, includes 1 year Hardware Warranty. Supports up to 1000 Modular APs.
XM-3340	XMS Linux-based 1U appliance, includes 1 year Hardware Warranty. Supports up to 2000 Modular APs.
XM-3360	XMS Linux-based 2U appliance, includes 1 year Hardware Warranty. Supports up to 3000 Modular APs.

Support & Maintenance

Xirrus is committed to the success of our customers and provides warranties and support options to best fit your needs. For further information on the Xirrus hardware warranties, software support and premium support offerings visit:

<http://www.xirrus.com/support/warranty.php>

About Xirrus

To organizations who depend on wireless access to transform their business, Xirrus is the wireless network solution provider that provides the world's most powerful, scalable, and trusted solutions. Through product invention and system design, commitment to customer success, and the industry's best price performance, Xirrus gives you confidence that your wireless network performs under even the most demanding circumstances. Headquartered in Thousand Oaks, CA, Xirrus is a privately held company and designs and manufactures its family of products in the USA.



1.800.947.7871 Toll Free in the US
+1.805.262.1600 Sales
+1.805.262.1601 Fax
2101 Corporate Center Drive
Thousand Oaks, CA 91320, USA

To learn more visit:
xirrus.com or
email info@xirrus.com