

Barracuda NextGen Firewall F

Scalable Security for the Enterprise



Enterprise networks grow larger and more complex every day - and more critical to key business operations. The Barracuda NextGen Firewall F-Series is an essential tool to **optimize the performance, security, and availability of today's dispersed enterprise WANs.**

- ✓ Security
- Storage
- Application Delivery
- Productivity

The Barracuda Advantage

Effective WAN Management

- Application-based traffic prioritization across the WAN
- Intelligent uplink balancing
- Intelligent traffic re-prioritization on uplink loss

Enterprise Readiness

- Industry-leading centralized management
- WAN optimization
- Global WAN monitoring with Barracuda Earth

Scalable Security

- Cloud Enablement and secure WAN Virtualization
- Drag-and-drop VPN graphical tunnel interface

Product Spotlight

- Powerful next-generation network firewall
- Advanced Threat Detection
- Built-in web security and IDS/IPS
- Dynamic mesh site-to-site VPN
- Client-to-Site VPN via browser (SSL VPN), mobile apps and desktop VPN clients
- Full application visibility and granular control
- Intelligent traffic regulation including application-based provider selection
- Tightly integrated Quality of Service (QoS) and link balancing
- Centralized management of all functionality
- Template-based and role-based configuration



Integrated Next-Generation Security

The Barracuda NextGen Firewall F-Series is designed and built from the ground up to provide comprehensive, next-generation firewall capabilities. Cloud-hosted content filtering and reporting offload compute-intensive tasks to the cloud for greater resource efficiency and throughput. Based on application visibility, user-identity awareness, intrusion prevention, and centralized management, F-Series is the ideal solution for today's dynamic enterprises.



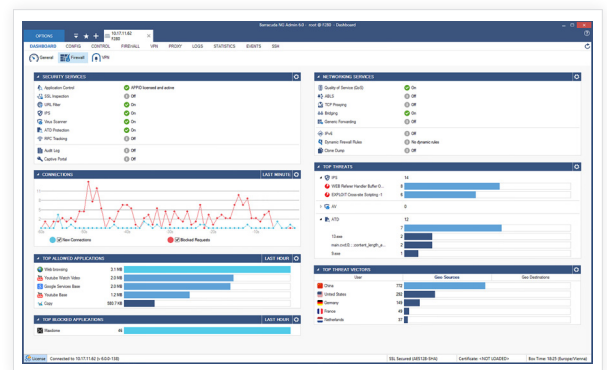
True Enterprise Readiness

The Barracuda NextGen Firewall F-Series meets the enterprise requirements for massive scalability and efficient management across distributed networks. Integrated WAN optimization and dedicated centralized management appliances enable organizations to increase system availability while keeping administrative time and operation costs low.



Regaining Control of User Activity

The Barracuda NextGen Firewall F-Series restores control to networks made opaque and unmanageable by mobile devices at work, Web 2.0 applications, increasing dispersion, and the growing integration and dependence on cloud-based resources. It extends security coverage beyond network boundaries, and makes it easy to monitor and regulate everything the network and its users are doing.



The Barracuda NextGen Firewall F-Series' dashboard provides real-time information and summaries of what is going on in an organization's network.

Recently I tried one of these dedicated products to protect of advanced persistent threats. After one month of extensive monitoring it turned out that our Barracuda NextGen Firewall F protects our infrastructures so well, that we can continue to focus on actual business problems. Having chosen the right firewall still saves us money and time every day.

Chief Information Officer
Union of Turkish Bar Associations

Technical Specs

Firewall

- Stateful packet inspection and forwarding
- Full user-identity awareness
- Intrusion Detection and Prevention System (IDS/IPS)
- Application control and granular application enforcement
- Interception and decryption of SSL/TLS encrypted applications
- Antivirus and web filtering in single pass mode
- SafeSearch enforcement
- YouTube for Schools support
- Denial of Service protection (DoS/DDoS)
- Spoofing and flooding protection
- ARP spoofing and trashing protection
- DNS reputation filtering
- TCP stream reassembly
- Transparent proxying (TCP)
- NAT (SNAT, DNAT), PAT
- Dynamic rules / timer triggers
- Single object-oriented rule set for routing, bridging, and routed bridging
- Virtual rule test environment

User Identity Awareness

- Terminal Server Agent
- Domain Controller Agent
- Authentication – supports x.509, NTLM, RADIUS, RSA SecurID, LDAP/LDAPS, Active Directory, TACACS+, SMS Passcode (VPN), local authentication database
- WiFi Access Point Authentication support

Intrusion Detection and Prevention

- Protection against exploits, threats and vulnerabilities
- Packet anomaly and fragmentation protection
- Advanced anti-evasion and obfuscation techniques
- Automatic signature updates

Traffic Optimization

- Link monitoring, aggregation, and failover
- Dynamic routing
- Application-based provider selection
- Traffic shaping and QoS
- On-the-fly flow reprioritization
- Stream and packet compression
- Byte-level data deduplication
- Protocol optimization (SMBv2)

Advanced Threat Detection

- Dynamic, on-demand analysis of malware programs (sandboxing)
- Dynamic analysis of documents with embedded exploits (PDF, Office, etc.)
- Detailed forensics for both, malware binaries and web threats (exploits)
- Support for multiple operating systems (Windows, Android, etc.)
- Flexible malware analysis in the cloud

VPN

- Drag & drop VPN tunnel configuration
- Secure site-to-site, client-to-site VPN
- Dynamic mesh site-to-site VPN
- Supports AES-128/256, 3DES, DES, Blowfish, CAST, null ciphers
- Private CA or external PKI
- VPN certified (basic interoperability)
- Application-aware traffic routing
- IPsec VPN / SSL VPN / TINA VPN/ L2TP / PPTP
- Network Access Control
- iOS and Android mobile device VPN support

High Availability

- Active-active (requires external load balancer) or active-passive
- Transparent failover without session loss
- Network notification of failover
- Encrypted HA communication

Central Management Options

- Barracuda NextGen Control Center
 - Unlimited firewalls
 - Support for multi-tenancy
 - Multi-administrator support & RCS

Infrastructure Services

- DHCP server, relay
- SIP, HTTP, SSH, FTP proxies
- SNMP and IPFIX support
- DNS Cache
- SMTP gateway and SPAM filter
- Wi-Fi (802.11n) access point on selected models

Protocol Support

- IPv4, IPv6
- BGP/OSPF/RIP
- VoIP (H.323, SIP, SCCP [skinny])
- RPC protocols (ONC-RPC, DCE-RPC)
- 802.1q VLAN

Support Options

Barracuda Energize Updates

- Standard technical support
- Firmware updates
- IPS signature updates
- Application control definition updates
- Web filter updates

Instant Replacement Service

- Replacement unit shipped next business day
- 24/7 technical support
- Free hardware refresh every four years

Security Options

- Advanced Threat Detection
- NextGen Web Filter
- Malware Protection
- Basic Remote Access subscription provides browser-based remote access (SSL VPN) with Network Access Control (NAC)

- Premium Remote Access subscription provides remote access via the CudaLaunch App for iOS and Android devices

| MODEL COMPARISON | F10 | F18 | F80 | F180 | F280 | F380 | F400 SUBMODELS | | F600 SUBMODELS | | | F800 SUBMODELS | | | F900 SUBMODELS | | | F1000 SUBMODELS | | | |
|--|--------------|---------------|-----------|-----------|----------|---------------|-------------------|------------------------|------------------------|------------------------|-------------------------|----------------|-------------------|----------|----------------|----------|----------|-----------------|----------|----------|-----|
| | | | | | | | STD | F20 | C10 C20 | F10 F20 | E20 | CCC | CCF | CCE | CCC | CCE | CFE | CCC | CCE | CFE | CE0 |
| CAPACITY | | | | | | | | | | | | | | | | | | | | | |
| Firewall Throughput ¹ | 300 Mbps | 1.0 Gbps | 1.35 Gbps | 1.65 Gbps | 3.0 Gbps | 3.8 Gbps | 5.5 Gbps | 16.3 Gbps ⁶ | 19.6 Gbps ⁶ | 22.2 Gbps ⁶ | 40 Gbps ⁶ | | | | | | | | | | |
| VPN Throughput ² | 85 Mbps | 190 Mbps | 240 Mbps | 300 Mbps | 1.0 Gbps | 1.2 Gbps | 1.2 Gbps | 2.3 Gbps ⁶ | 7.3 Gbps ⁶ | 7.8 Gbps ⁶ | 10 Gbps ⁶ | | | | | | | | | | |
| IPS Throughput ¹ | 60 Mbps | 400 Mbps | 500 Mbps | 600 Mbps | 1.0 Gbps | 1.4 Gbps | 2.0 Gbps | 5.0 Gbps ⁶ | 6.5 Gbps ⁶ | 7.1 Gbps ⁶ | 13 Gbps ⁶ | | | | | | | | | | |
| Concurrent Sessions | 2,000 | 80,000 | 80,000 | 100,000 | 250,000 | 400,000 | 500,000 | 2,100,000 ⁶ | 2,500,000 ⁶ | 4,000,000 ⁶ | 10,000,000 ⁶ | | | | | | | | | | |
| New Session/s | 1,000 | 8,000 | 8,000 | 9,000 | 10,000 | 15,000 | 20,000 | 115,000 ⁶ | 150,000 ⁶ | 160,000 ⁶ | 250,000 ⁶ | | | | | | | | | | |
| HARDWARE | | | | | | | | | | | | | | | | | | | | | |
| Form Factor | Desktop mini | Desktop | | | | 1U rack mount | | | | | | 2U rack mount | | | | | | | | | |
| 1 GbE Copper Ethernet NICs | 4x | 4x | 4x | 6x | 6x | 8x | 8x | 8x | 12x | 8x | 8x | 20x | 12x | 12x | 24x | 16x | 8x | 16x | 32x | 16x | |
| 1 GbE Fiber NICs (SFP) | | | | | | | | 4x | 4x | | | 4x | | | | | 8x | | | 16x | |
| 10 GbE Fiber NICs (SFP+) | | | | | | | | | | 2x | | | 4x | | | | 4x | 4x | 4x | 8x | 8x |
| Integrated Switch | | | | 8-port | 8-port | | | | | | | | | | | | | | | | |
| Wi-Fi Access Point | | | • | • | • | | | | | | | | | | | | | | | | |
| Power Supply | | Single (ext.) | | | | Single | Dual ⁷ | Single ⁸ | | | | | Dual ⁷ | | | | | | | | |
| FEATURES | | | | | | | | | | | | | | | | | | | | | |
| Firewall | • | • | • | • | • | • | • | • | • | • | • | • | • | • | • | • | • | • | • | • | |
| Application Control ³ | • | • | • | • | • | • | • | • | • | • | • | • | • | • | • | • | • | • | • | • | |
| IPS ³ | • | • | • | • | • | • | • | • | • | • | • | • | • | • | • | • | • | • | • | • | |
| Dynamic Routing | • | • | • | • | • | • | • | • | • | • | • | • | • | • | • | • | • | • | • | • | |
| App-based Provider Selection | • | • | • | • | • | • | • | • | • | • | • | • | • | • | • | • | • | • | • | • | |
| VPN | • | • | • | • | • | • | • | • | • | • | • | • | • | • | • | • | • | • | • | • | |
| SSL Interception | • | • | • | • | • | • | • | • | • | • | • | • | • | • | • | • | • | • | • | • | |
| WAN Optimization | | • | • | • | • | • | • | • | • | • | • | • | • | • | • | • | • | • | • | • | |
| Web Filter | | • | • | • | • | • | • | • | • | • | • | • | • | • | • | • | • | • | • | • | |
| Mail Gateway & Spam Filter | | | | • | • | • | • | • | • | • | • | • | • | • | • | • | • | • | • | • | |
| NextGen Web Filter | | Optional | Optional | Optional | Optional | Optional | Optional | Optional | Optional | Optional | Optional | Optional | Optional | Optional | Optional | Optional | Optional | Optional | Optional | Optional | |
| Malware Protection ⁴ | | Optional | Optional | Optional | Optional | Optional | Optional | Optional | Optional | Optional | Optional | Optional | Optional | Optional | Optional | Optional | Optional | Optional | Optional | Optional | |
| Advanced Threat Detection ^{4,5} | | Optional | Optional | Optional | Optional | Optional | Optional | Optional | Optional | Optional | Optional | Optional | Optional | Optional | Optional | Optional | Optional | Optional | Optional | Optional | |
| Basic Remote Access | | | Optional | Optional | Optional | Optional | Optional | Optional | Optional | Optional | Optional | Optional | Optional | Optional | Optional | Optional | Optional | Optional | Optional | Optional | |
| Premium Remote Access ⁹ | | | Optional | Optional | Optional | Optional | Optional | Optional | Optional | Optional | Optional | Optional | Optional | Optional | Optional | Optional | Optional | Optional | Optional | Optional | |

¹ Measured with large packets (MTU1500) ² VPN throughput using AES128/256/NHASH ³ Requires Energize Updates subscription. ⁴ Including FTP, mail and Web protocols ⁵ Requires Malware Protection subscription. ⁶ Measured with 10GbE fiber ports ⁷ Internal dual hot swap power supply ⁸ Internal dual hot swap power supply optional. ⁹ Requires Basic Remote Access subscription. Specifications subject to change without notice.