

Datasheet: TruView™ Appliance

FAST

- **Simple Workflows:** Provide actionable visibility that drives to quick understanding of problem domain and root cause.
- **Racked to Reporting in 30 Minutes or Less:** Automated application discovery speeds setup and ongoing management.

INTELLIGENT

- **Self-learning Baselines:** Understand what's normal even at remote sites
- **Time correlated views:** See how well your network, applications and devices are performing

COMPLETE

- **View Analytics Across Multiple Data Sources:** Unified appliance correlates the most important data sources such as packet transaction, IPFIX (NetFlow) and SNMP
- **Integrated Stream-to-disk:** Continuously monitor and capture traffic on critical network links to facilitate back-in-time, deep packet analysis of traffic

CAPABILITIES

- **Application Performance Monitoring:** Response time and Retrospective Packet Analysis
- **Network Performance Monitoring:** Device Performance Monitoring and Network Traffic Analysis
- **VoIP Performance Monitoring:** VoIP quality of experience
- **Time correlated views:** See how well your network, applications and devices are performing

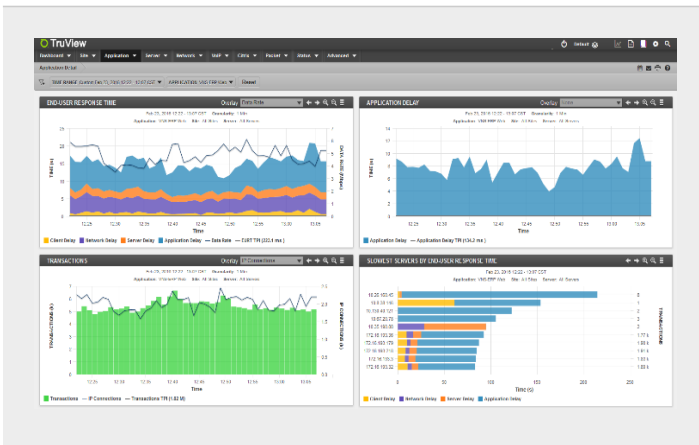
The problem faced by IT organizations today, is that the cross-functional IT teams, such as those focused on network, application, and server, are using different tools to identify performance issues within each of their domains. These disparate toolsets provide no correlated view into performance issues that may be present within any component across the application delivery infrastructure, and how one may be affecting the other at a specific point in time. This makes it difficult if not impossible to quickly understand how well the infrastructure is transporting applications, and how well those applications are performing. This lack of correlated visibility across the application delivery infrastructure makes it difficult for cross-functional IT teams to identify and agree on the culprit of a performance problem.

This lack of correlated visibility creates a non-collaborative environment and often leads to time consuming discussions, which at times can leave the team with no answer to the problem at hand. The application delivery infrastructure is a highly interdependent eco-system and with no visibility into how this entire system is performing as a single entity, organizations are faced with high costs in network downtime, lost revenues and poor performance in terms of fast problem identification.

A Better Way with TruView™ Appliance

TruView is a breakthrough advancement that sets a new bar in the way IT organizations will be able to quickly and effectively monitor and troubleshoot network and application performance problems. TruView is a single appliance that embeds the most important data sources such as packet, transaction, IPFIX (NetFlow), and SNMP and presents analytics in a time correlated single dashboard view. These correlated views will help you to quickly see how well the infrastructure is transporting applications and how well those applications are performing in context of the end user experience. And, TruView's integrated 10 Gbps full line rate stream-to-disk packet capture ensures you'll never miss an important event again.

Metrics from the various data sources are gathered in a common database where time correlated analytics across data sources is displayed through a single dashboard view. TruView's multi-tenant dashboard allows each user to define the custom view that is specific to their domain of responsibility. Because all users are pulling from the same common database of correlated analytics, collaboration across IT teams can be realized and performance issues more quickly identified and agreed upon, which leads to overall faster MTTR and confidence by the business in the IT teams ability to maintain quality end user experience.

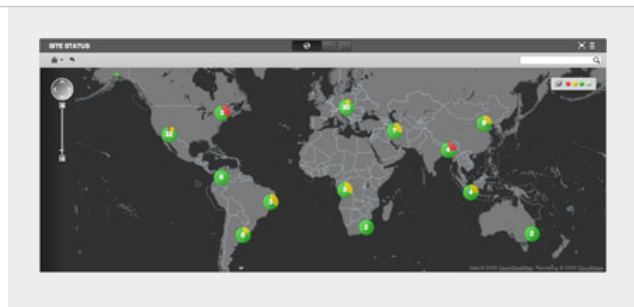


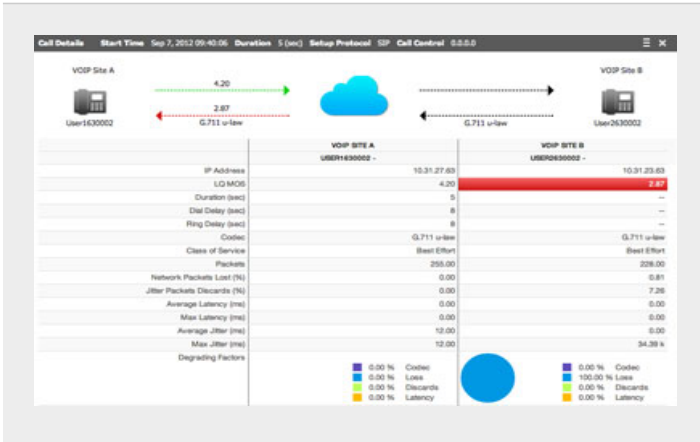
A Better Way with TruView™ Appliance

Out of the box workflows that quickly isolate client, server, network and application performance degradations. Allowing you to identify the scope, impact and the exact transactions/packets describing the issue within three clicks.

Integrated Performance Maps

With the performance map it is now easier than ever to watch over the entire enterprise network and isolate down to the network element, transaction or even packet behind any performance event.



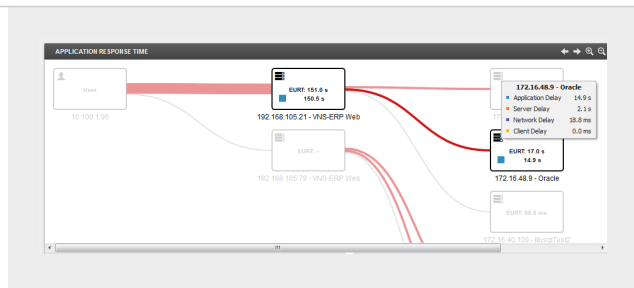


Advanced VoIP Analysis

VoIP performance monitoring and troubleshooting has never been easier with 1-click access to visualizing individual user call quality and associated degradation factors.

N-Tier Visibility

TruView automatically correlates the tiers of your applications, allowing you to quickly identify the problem tier of your complex applications. TruView then provides transaction and packet level visibility within each tier, for root cause.

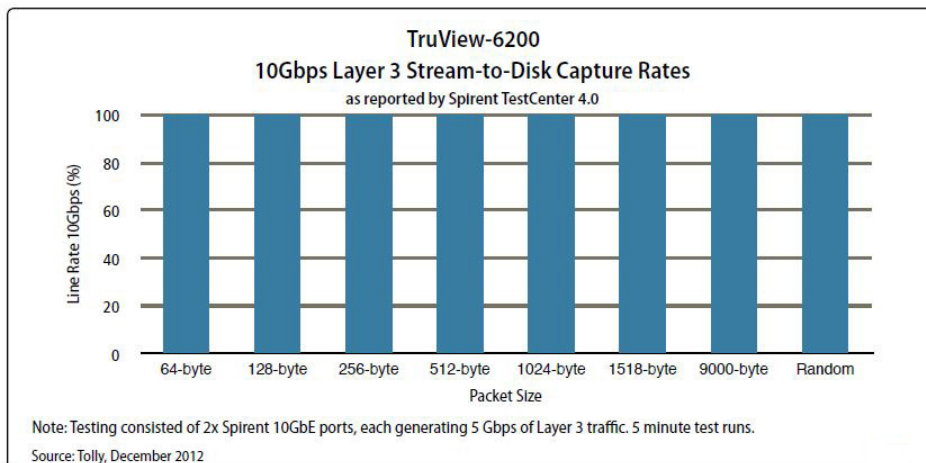


See the Difference

Key Attributes	TruView Advantage
End-to-end Visibility : A TRUE single appliance approach for complete end-to-end network based application performance monitoring and troubleshooting.	When we say single appliance we mean it! One box, one price tag, that's it.
Advanced Transaction Analysis : Built-in decode support.	TruView provides transaction level visibility with stream reconstruction into the N-Tier environment, to help visualize what the end user actually experienced on their screen.
Self-Guided Workflows : We built workflows that pattern after a logical troubleshooting thought process.	Because of the way we present our performance results within a single dashboard view, incredibly complex analytics are made simple to understand.
Multiple Tools in One : Stream to disk, packet and transaction analyzer, NetFlow analyzer, device management, and a management dashboard all in one.	Tool consolidation has never been so easy.

Key Attributes

- Single UI displays through a highly customizable dashboard
- Automated Application/Server/Site Discovery
- N-Tier application and transaction performance analysis
- End-user experience baselining and monitoring
- High volume packet archival at 10Gbps line rate
- Comprehensive VoIP monitoring and troubleshooting
- Multi-segment Analysis
- Highly flexible and extensible reporting
- QoS/CoS monitoring and reporting
- Device health, performance and availability
- Virtual traffic flow analysis
- SLA monitoring for enterprise and cloud based applications



THE BOTTOM LINE

1. Demonstrated sustained, loss free 10 Gbps stream-to-disk capture performance with various frame sizes that included simultaneous input of both packet and flow data.
2. Provided integrated, comprehensive retrieval and time correlated analysis of transaction, packet, flow and SNMP analytics on a single dashboard
3. Deployed from racked to displaying network data in less than 15 minutes

TruView™ Appliance Family

The TruView family of appliances provides a price/performance value unmatched in the industry for the depth of visibility and capability you will receive in a single platform with the smallest footprint available.



Specs	TruView – 4300	TruView – 6300
Monitor	4 x 1 Gbps	2 x 10 Gbps
Storage	10-37 TB	27-243 TB
Rack-Space	2U	2U

For further information visit: enterprise.netscout.com

A Unified Application and Network Performance Monitoring and Troubleshooting Appliance that Solves Problems FAST